

Zirconia Disks

# Zirtooth® Series

High Aesthetic



Aesthetic & Strength



High Strength



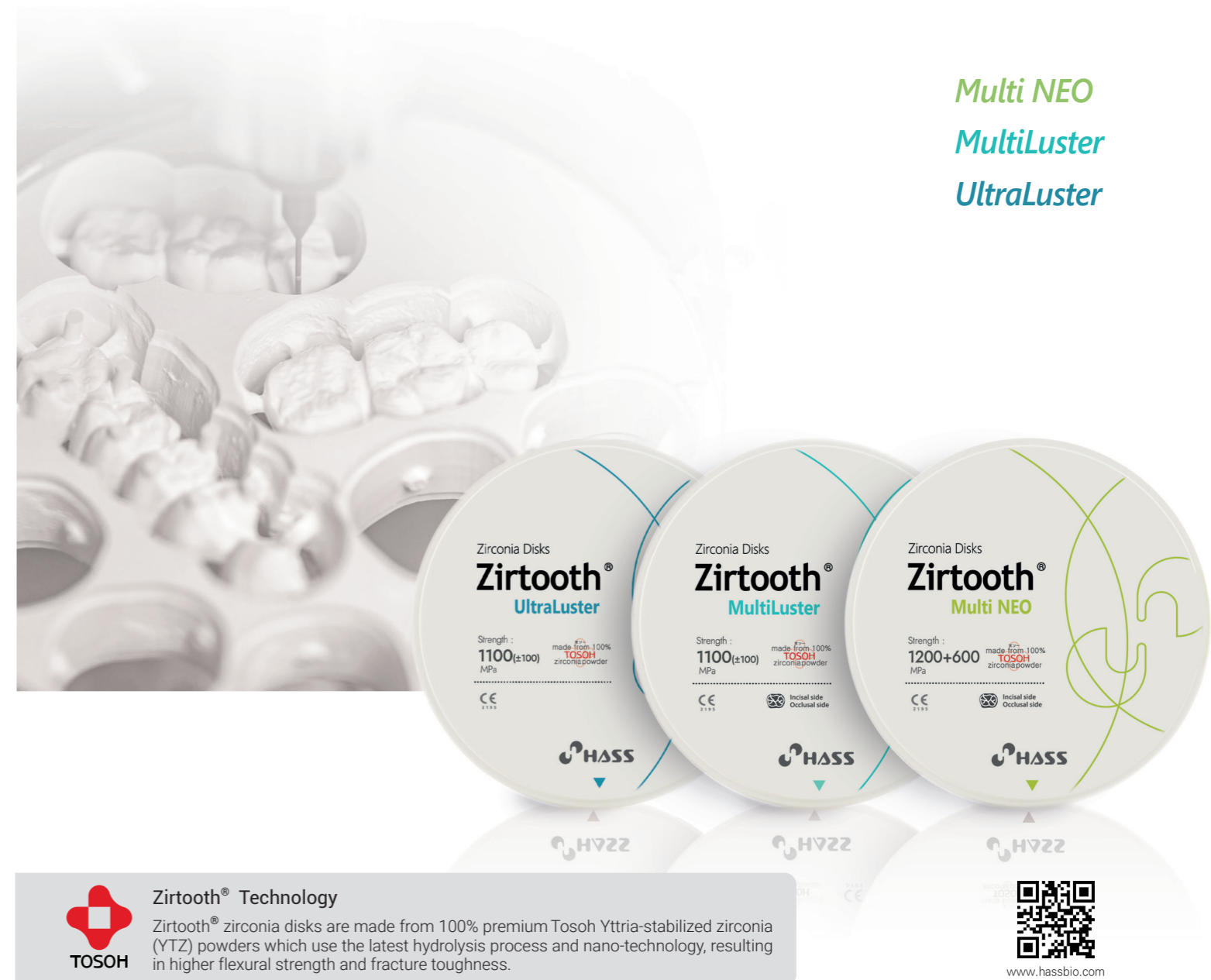
	Multi NEO	MultiLuster	UltraLuster
Translucency * thickness of sample : 0.5mm	<p>49% 45% 42%</p>	<p>45% 42%</p>	<p>45% / HT    44% / A1 42% / A2    40% / A3</p>
Flexural Strength	600 MPa~1200 Mpa	1100 MPa	1100 MPa
Shade	HT(A0) + VITA 16 shade	VITA 16 shade	HT(A0) + 3 preshade
	HT(A0),A1,A2,A3,A3.5,A4, B1,B2,B3,B4, C1,C2,C3,C4,D2,D3,D4	A1,A2,A3,A3.5,A4, B1,B2,B3,B4 C1,C2,C3,C4,D2,D3,D4	HT(A0), A1, A2, A3
Thickness	12T,14T,16T,18T,20T,22T,25T		10T, 12T,14T, 16T,18T,20T,22T,25T
Shade Type	O-98, Z-95		

All Ceramic Materials for All-Ceramic Restorations

Zirconia Disks

# Zirtooth® Series

Multi NEO  
MultiLuster  
UltraLuster



Zirtooth® Technology

Zirtooth® zirconia disks are made from 100% premium Tosoh Yttria-stabilized zirconia (YTZ) powders which use the latest hydrolysis process and nano-technology, resulting in higher flexural strength and fracture toughness.



www.hassbio.com

**HASS Corporation**

77-14, Gwahakdanji-ro, Gangneung-si, Gangwon-do, KOREA 25452  
Tel: +82-70-7712-1300 / Fax: +82-33-644-1231  
Customer Support : +82-2-2083-1367  
E-mail : hasscorp@hassbio.com  
Website : www.hassbio.com

Printed in KOREA © HASS Corporation. All rights reserved.

This material is designed for usage in dentistry. Follow instructions HASS is not liable for any loss caused by failure to comply with regulation or scope of indication. Users are responsible for testing products to verify the compatibility for any usage which are not written in the instructions. The explanations and data contained within do not carry any guarantees and/or obligations. All enclosed recommendations and restrictions apply when used with products from other manufacturers.

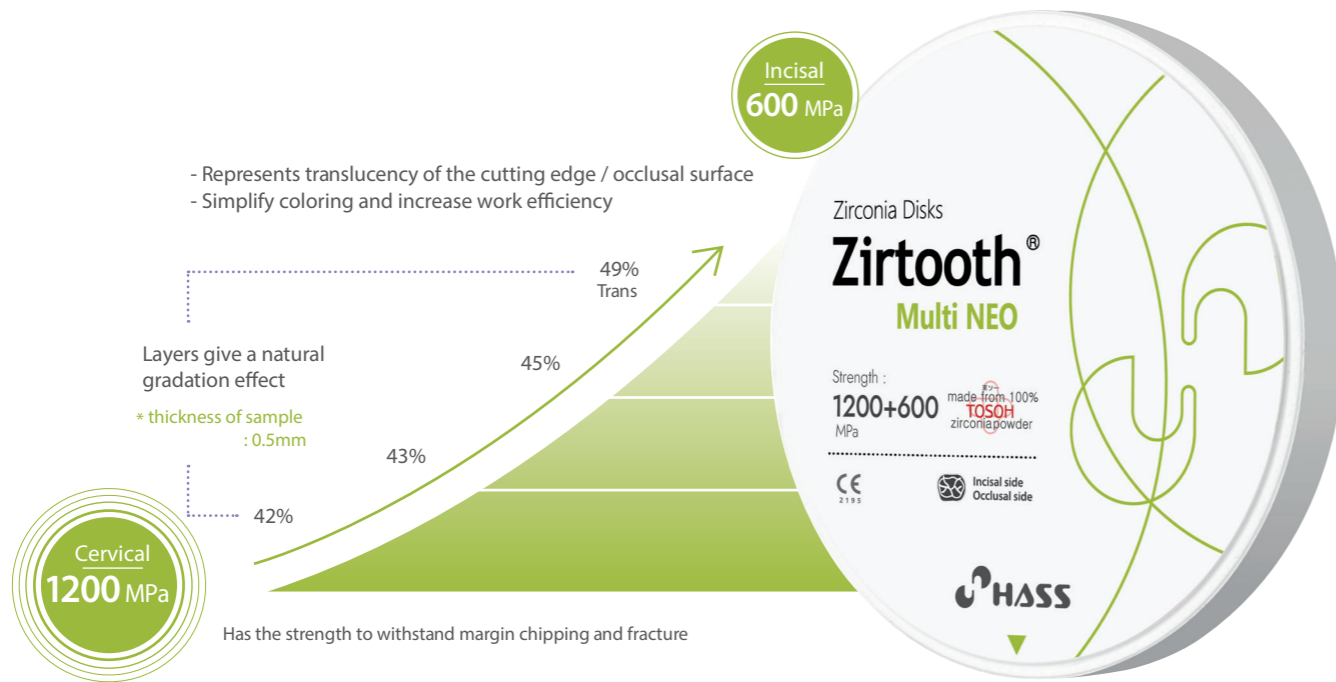
Zr\_BR\_IM\_EN\_210902



# Zirtooth® Multi NEO

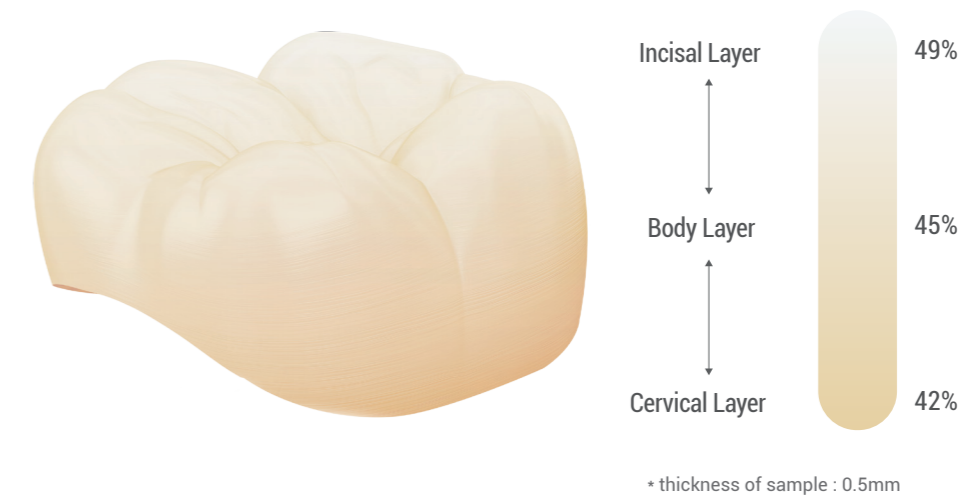
## High Aesthetic

- Represent High Translucency of the Incisal Layer similar with Natural Teeth
- Various shade composition based on the Vita Shade Guide
- Multi strength & multi translucency



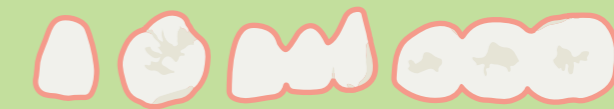
## Multi NEO

- Translucency ●●●●●
- Strength ●●●○○
- Aesthetic ●●●●●



## Indication

- Anterior Crown
- Posterior Crown
- 3-Unit Bridge



## Sintering Schedule

Step	1	2	3
Temperature	Room temperature ~ 1000°C	1000°C~ 1500°C	1500°C ~ Room temperature
Heating Rate	Max 9°C	Max 3.5°C	Max 8°C
Holding Time	10 min	2 hours	-

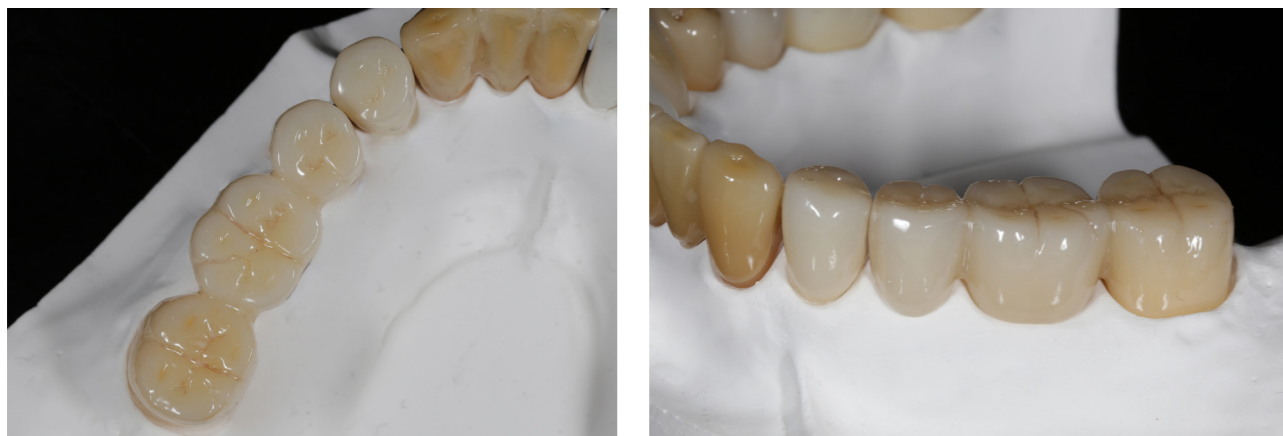
## Size

Model No.	Dimensions	Model No. * Zirkozahn	Dimensions
O-9812	ø98 × 12T	Z-95(12)	ø95 × 12T
O-9814	ø98 × 14T	Z-95(14)	ø95 × 14T
O-9816	ø98 × 16T	Z-95(16)	ø95 × 16T
O-9818	ø98 × 18T	Z-95(18)	ø95 × 18T
O-9820	ø98 × 20T	Z-95(20)	ø95 × 20T
O-9822	ø98 × 22T	Z-95(22)	ø95 × 22T
O-9825	ø98 × 25T	Z-95(25)	ø95 × 25T

## Available Shades

HT (White)
A1, A2, A3, A3.5, A4
B1, B2, B3, B4
C1, C2, C3, C4
D2, D3, D4

## Clinical Case



Zirtooth Multi Neo A2 - Shade A2(35), A3(36), A3.5(37)  
\* after color characterization

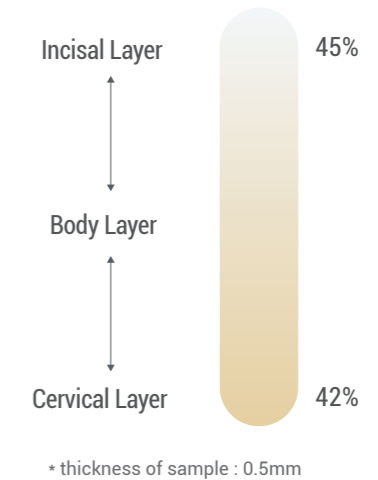
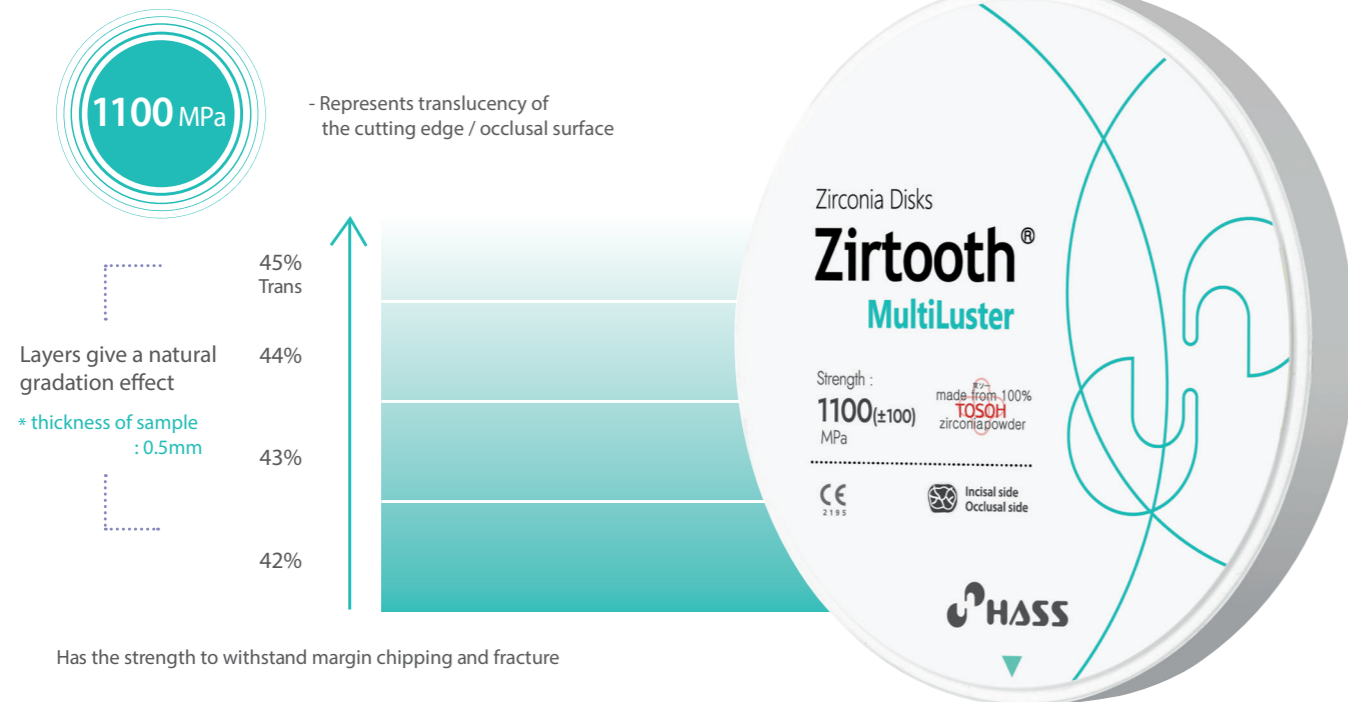
# Zirtooth® MultiLuster

## MultiLuster

- Translucency ●●●○○
- Strength ●●●●●
- Aesthetic ●●●●○

### Aesthetic & Strength

- Natural gradation of shades
- Excellent strength to withstand margin chipping and fracture
- Gradation block with the same strength from cervical to incisal



### Indication

- Anterior Crown
- Posterior Crown
- 3-Unit Bridge
- Long-span Bridge



### Sintering Schedule

Step	1	2	3
Temperature	Room temperature ~ 1000°C	1000°C~ 1530°C	1530°C ~ Room temperature
Heating Rate	Max 9°C	Max 3.5°C	Max 8°C
Holding Time	10 min	2 hours	-

### Size

Model No.	Dimensions	Model No. * Zirkozahn	Dimensions
O-9812	ø98 × 12T	Z-95(12)	ø95 × 12T
O-9814	ø98 × 14T	Z-95(14)	ø95 × 14T
O-9816	ø98 × 16T	Z-95(16)	ø95 × 16T
O-9818	ø98 × 18T	Z-95(18)	ø95 × 18T
O-9820	ø98 × 20T	Z-95(20)	ø95 × 20T
O-9822	ø98 × 22T	Z-95(22)	ø95 × 22T
O-9825	ø98 × 25T	Z-95(25)	ø95 × 25T

### Available Shades

- A1, A2, A3, A3.5, A4
- B1, B2, B3, B4
- C1, C2, C3, C4
- D2, D3, D4

### Clinical Case



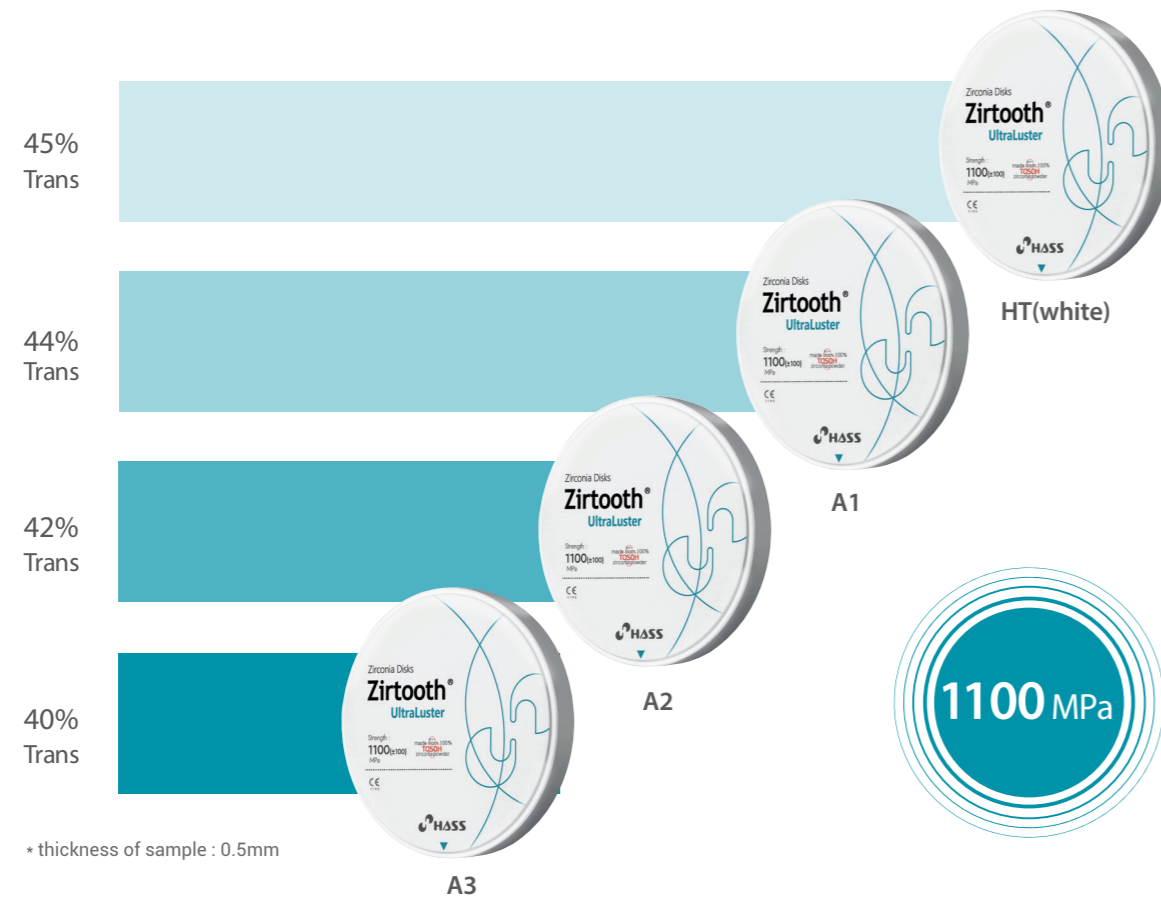
Zirtooth MultiLuster A2 - Shade A2(24-25), A3(26), A3.5(27)  
\* after color characterization



# Zirtooth® UltraLuster

## High Strength

- Excellent strength and transparency (**1100MPa**)
- Suitable for various types of prosthesis



## Clinical Case



Zirtooth UltraLuster A1 - Shade A2(15), A3(16), A3.5(17)  
\* after color characterization

## UltraLuster

- Translucency ●●●○○
- Strength ●●●●●
- Aesthetic ●●●○○



## Indication

- Anterior Crown
- Posterior Crown
- 3-Unit Bridge
- Long-span Bridge



## Sintering Schedule

Step	1	2	3
Temperature	Room temperature ~ 1000°C	1000°C~ 1530°C	1530°C ~ Room temperature
Heating Rate	Max 9°C	Max 3.5°C	Max 8°C
Holding Time	10 min	2 hours	-

## Size

Model No.	Dimensions	Model No. * Zirkozahn	Dimensions
O-9810	ø98 × 10T	Z-95(10)	ø95 × 10T
O-9812	ø98 × 12T	Z-95(12)	ø95 × 12T
O-9814	ø98 × 14T	Z-95(14)	ø95 × 14T
O-9816	ø98 × 16T	Z-95(16)	ø95 × 16T
O-9818	ø98 × 18T	Z-95(18)	ø95 × 18T
O-9820	ø98 × 20T	Z-95(20)	ø95 × 20T
O-9822	ø98 × 22T	Z-95(22)	ø95 × 22T
O-9825	ø98 × 25T	Z-95(25)	ø95 × 25T

## Available Shades

- HT (White)
- A1
- A2
- A3